

# NexSens mV to RS-485 Signal Adapter Quick Start Guide

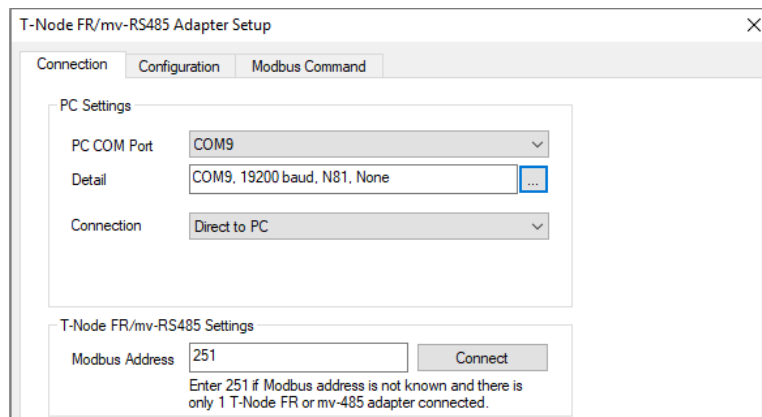
The NexSens mV-RS485 signal adapter converts a standard mV output signal to RS-485, allowing analog sensors to be integrated with an X2-Series data logger. The adapter is compatible with LI-COR, Turner Designs, and many other voltage output sensors.



## Configure the mV to RS-485 Adapter

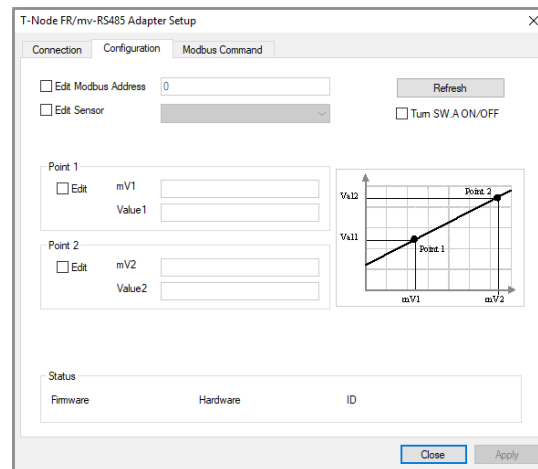
**Note:** The mV to RS-485 adapter will generally be pre-configured before shipment. If this is the case, skip to the **Getting Started** section.

- 1 Use a UW-USB-485R cable to connect the mV-RS-485 adapter to a PC that contains the latest iChart software.
- 2 From the tool bar at the top, select **Advanced | T-Node FR/mV-RS485 Adapter | Setup...**

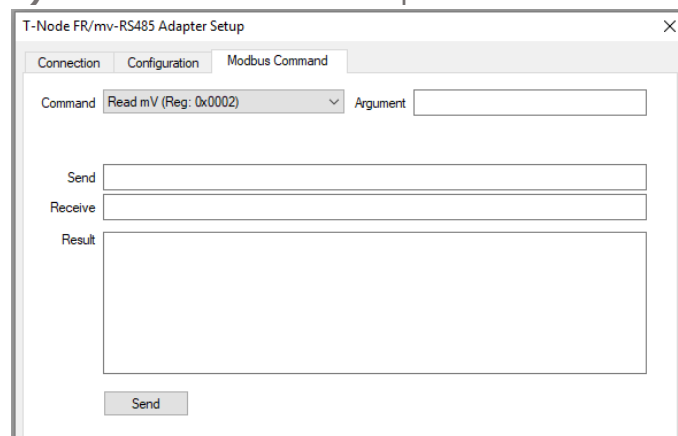


- 3
  - Select the **PC COM Port** to which the adapter is connected
  - Set the connection type to **Direct to PC**
  - Enter the **Modbus Address** (If this address is unknown, use the universal address of 251)
- 4 Click **connect**, and go to the **Configuration** tab

# NexSens mV to RS-485 Signal Adapter Quick Start Guide



- 5 Check the edit boxes for Point 1 and 2. Enter the appropriate scaling values for mV1, Value1, mV2, and Value2. Then click **Apply**
- 6 To view real-time data, open the **Modbus Command** tab. Select **Read mV (Reg: 0x0002)** from the Command dropdown and click **Send**.



- 7 When all settings are configured correctly, click **Apply** and **Close** to exit the setup window.

## Getting Started

- 1 Connect the plug end of the mV-RS-485 adapter into a sensor port on the X2-series data logger
- 2 Connect the sensor cable to the receptacle end of the adapter.
- 3 Follow the X2 data logger **Quick Start Guide** and verify the mV-RS485 adapter information updates to WQData LIVE following the sensor detection.