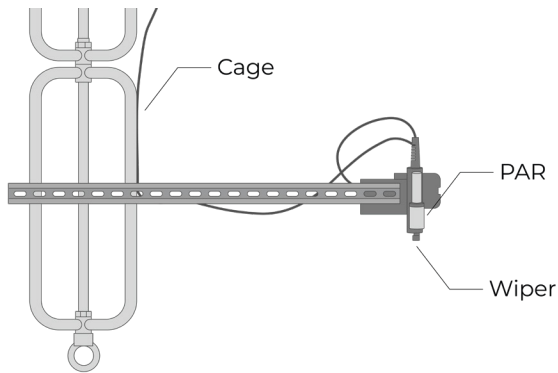


# UNDERWATER PAR SENSOR MOUNT

## INSTALLATION INSTRUCTIONS



**Figure 1:** NexSens Underwater PAR Sensor Mount

### Overview

The M-ARM-P mounting extension is used to mount a Li-COR Li-192 PAR sensor and Zebra-Tech Hydro-wiper to a subsurface instrument cage. The Hydro-wiper prevents biofouling of the sensor allowing for long-term deployments.

### What's Included?

#### Unistrut Arm and Accessories

- (1) Installation guide
- (1) 6ft. Stainless steel mounting arm
- (2) U-Bolt w/ mounting plate (1" ID) (instrument cage)
- (4) 1/4-20 Nylon insert locknuts (instrument cage)
- (2) 3/8-16 1-1/4" Hex head cap screws (XL instrument cage)
- (2) 3/8" Fender washer
- (2) 3/8" Flat washer
- (2) 3/8-16 Nylon insert locknuts

#### Mounting Block to Unistrut Arm

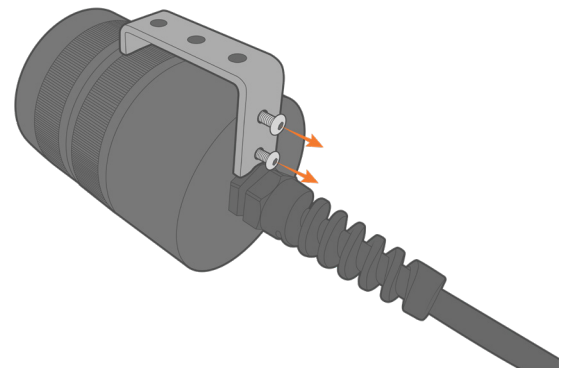
- (1) PAR/Wiper Mounting block
- (2) 3/8-16 x 1-5/8" Hex head cap screws
- (2) 3/8" Fender washer
- (2) 3/8" Flat washer
- (2) 3/8-16 Nylon insert locknuts

#### Hydro Wiper and PAR Sensor to Mounting Block

- (1) Zebra-tech Li-COR mount
- (7) 10-32 x 1/2" Pan head screws
- (7) 10-32 Nylon insert locknuts
- (7) #10 flat washers

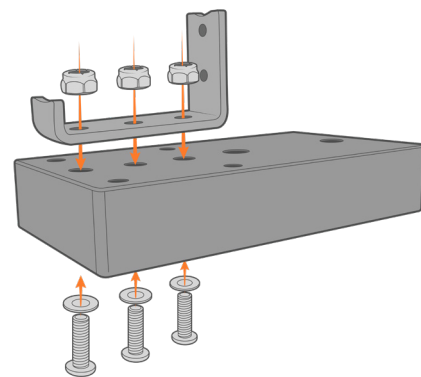
### Battery Pack Mounting

- 1 Use a 2.5 metric allen wrench to remove the two screws from the battery pack mount.
  - a. Note: Remember the orientation of the battery mount, as this item will be reinstalled in step #3.



**Figure 2:** Remove the battery mount screws.

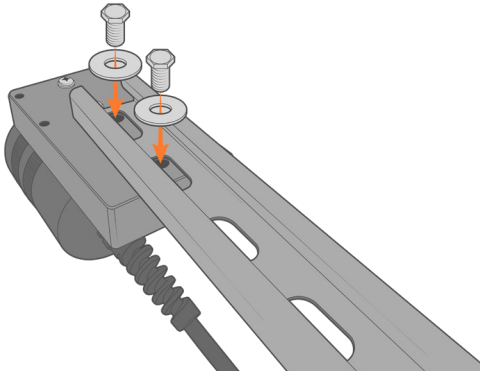
- 2 Insert (3) 10-32 x 1-1/2" pan head screws into the mounting block and through the battery mount.
  - a. Place a #10 flat washer and 10-32 nylon locknut on each screw, and tighten using a Philips screwdriver and a 3/8" wrench or socket.



**Figure 3:** Connect the battery mount to the mounting block.

- 3 Reinstall the battery pack onto the battery mount using the (2) screws removed in step #1.

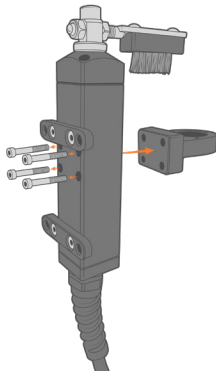
- ④ Use the (2) 3/8 x 1-5/8" Hex head cap screws and a 9/16" socket wrench to attach the mounting block to the Unistrut arm.
- Insert (2) 3/8" flat washers, (2) 3/8" fender washers, and (2) 3/8-16 nylon locknuts onto the bolt.
  - Slide the fender washers into the Unistrut arm and align them with the (2) large holes on the mounting block.



**Figure 4:** Attach the mounting block to the Unistrut arm.

### Sensor and Wiper Installation

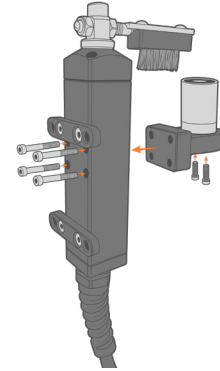
- ① Use a 2.5 metric allen wrench to remove the sensor holder from the Hydro wiper.



**Figure 5:** Remove the sensor holder.

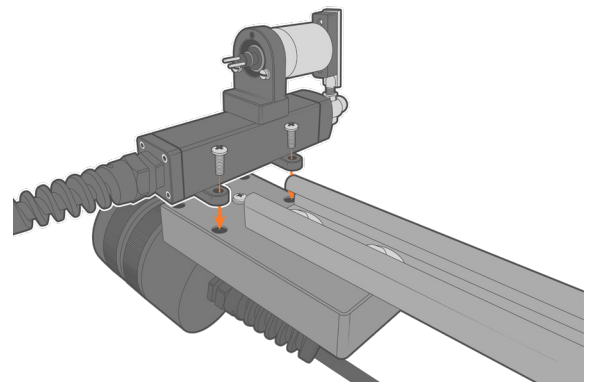
- ② Locate the yellow marking on the edge of the Li-COR 192's black collar.
- Note this location relative to the sensor label prior to placing the sensor into the holder. This will be necessary for proper cable orientation later.

- ③ Remove the protective red polymer cap from the face of the Li-COR 192, insert the sensor into the holder, and reattach the holder to the Hydro wiper.
- Align the screw holes of the PAR sensor with those on the sensor holder and place the included gasket on the sensor base.
  - Use a flat head screwdriver to insert the (3) 6-32 x 3/4" mounting screws provided by Li-COR into the bottom of the sensor holder.



**Figure 6:** Insert the sensor and reinstall the holder.

- ④ Use a 3/8" wrench and Philips head screwdriver to attach the Hydro wiper to the mounting block with the (4) remaining 10-32 x 1/2" Pan head screws, (4) #10 flat washers, and (4) 10-32 nylon locknuts.

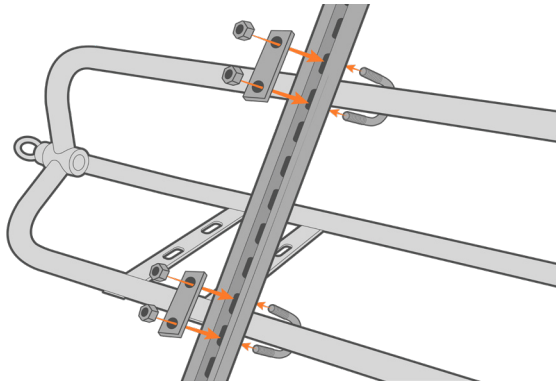


**Figure 7:** Insert the sensor and reinstall the holder.

- ⑤ Connect the Li-COR 192 (2222UWB) cable to the sensor by aligning the exterior dimple on the connector with the yellow mark identified earlier.
- Caution: Use care when connecting and disconnecting the sensor cable. Refer to the manufacturer's manual for proper handling.
  - Push the cable in gently until a click occurs, indicating the cable is fully locked into place. Twist the white cap until hand tight.

## Unistrut Attachment to Small Instrument Cage

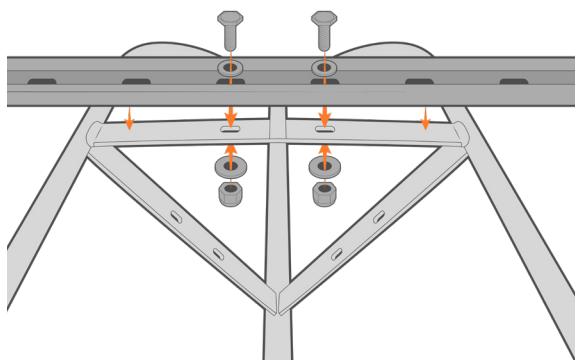
- 1 For small instrument cages (with CB-450 or smaller buoy models), place the U-bolts on the cage and align one of the U-bolt ends with a circular cutout on the interior of the Unistrut arm.
  - a. Use a  $7/16$ " socket wrench to secure the arm to the cage using the (4)  $1/4$ -20 nylon locknuts.
  - b. Evenly tighten each side of the U-bolts.



**Figure 8:** Unistrut attachment to small cage.

## Unistrut Attachment to XL Instrument Cage

- 1 For large instrument cages (with CB-650 or larger buoy models), slide the remaining fender washers into the groove of the Unistrut arm.
  - a. Align them with the slots of the arm and the large cage.
  - b. Use a  $3/8$ " socket wrench to secure the arm to the cage using the remaining hex head cap bolts, fender washers, and nylon locknuts.



**Figure 9:** Unistrut attachment to large cage.

## Pre-deployment Preparation

- Secure the sensor and wiper cable to the mounting arm using zip ties. Friction between the Unistrut arm and loose cables over time can damage or cut the cables entirely.
- Ensure to follow the included Zebra-Tech Hydro-Wiper guide for installing the included batteries and setting the wiper timer.
- Note: Proper application of counterweight in buoyant deployment configurations may be required to safely balance the PAR arm. Consult a marine engineer for mooring suggestions.
- During deployment, be sure that the PAR assembly is not being stressed by any additional mooring equipment for the system. NexSens is not responsible for any damages incurred during deployment.
- For further information, review the following manuals:
  1. Zebra-Tech Hydro-Wiper  
[https://www.fondriest.com/pdf/zebra\\_hydro-wiper-h\\_manual.pdf](https://www.fondriest.com/pdf/zebra_hydro-wiper-h_manual.pdf)
  2. Li-COR PAR Sensor  
<https://licor.app.boxenterprise.net/s/285ymmolackqjdu9wao>