

# CB-CCA CAGE ANTI-ROTATION COLLAR

## INSTALLATION INSTRUCTIONS



**Figure 1:** NexSens CB-CCA Anti-Rotation Collar.

### Overview

The CB-CCA cage anti-rotation collar securely connects an instrument cage to the frame of a CB-Series data buoy system and prevents rotation or loosening of the cage.

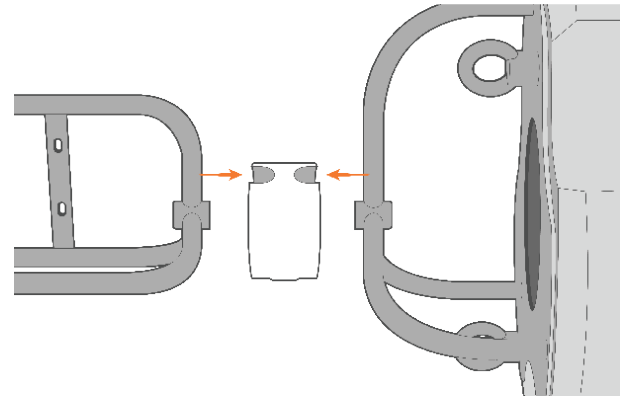
### What's Included

#### Anti-Rotation Collar Hardware

- (1) Cage mount (white nylon)
- (2) Cage mount plates
- (3) 3/4" Split lock washers
- (3) 3/4-10 Hex nuts
- (3) 3/4-10 x 4-1/2" Hex head bolts

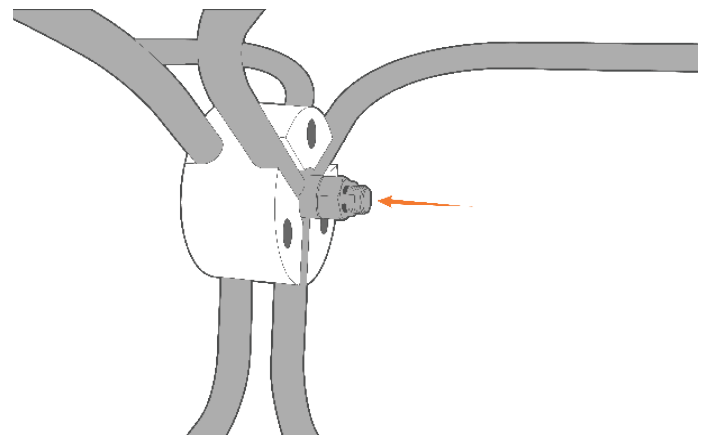
### Installation on Instrument Cage

- 1 Place the cage security bracket onto the ends of the cage and buoy frame.



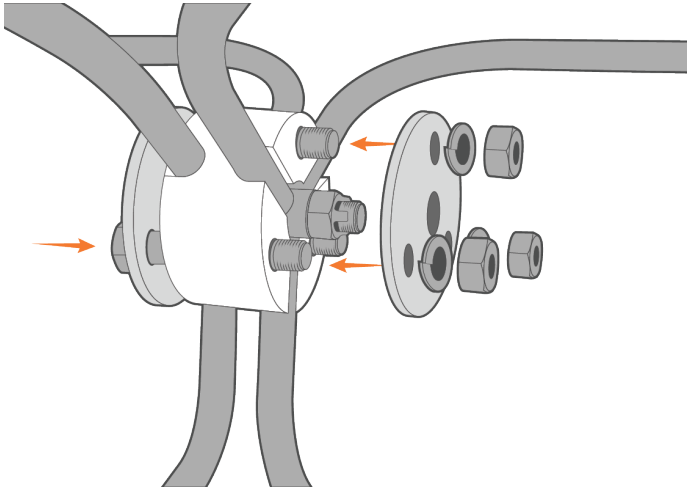
**Figure 2:** Place the cage and buoy frame within the security bracket mount.

- 2 Run the bolt with the pinhole downward through the buoy frame.
  - a. Place a lock washer and the castle nut onto the bolt.
  - b. Use a pair of 1-1/8" or adjustable wrenches to tighten the castle nut.
  - c. Ensure to align one of the troughs on the castle nut with the pinhole on the bolt.



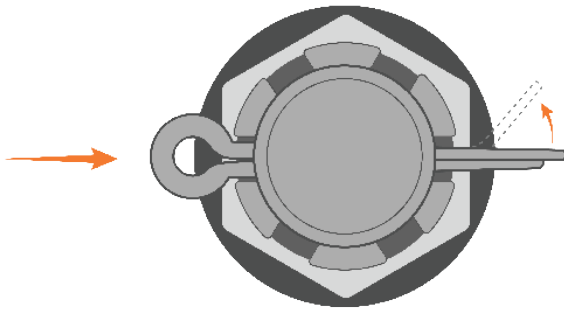
**Figure 3:** Secure bracket connection with the buoy frame and cage.

- 3 Place the end plates over the center bolt.
- Secure with the three remaining bolts, lock washers and nuts.



**Figure 4:** Use the end plates to cover the bracket mount openings for the cage and buoy frame.

- 4 Run the cotter pin through the hole in the center bolt.
- Bend the long leg around one of the ridges on the castle nut.



**Figure 5:** Bend the long leg of the cotter pin.