

SIGNATURE INSTRUMENT CAGE

INSTRUCTIONS



Figure 1: NexSens Signature1000 Instrument Cage.

Overview

The NexSens Signature1000 Instrument Cage provides a secure and convenient means of deploying a Nortek Signature1000 acoustic Doppler current profiler on a CB-Series data buoy.

What's Included

Mounting hardware

- (1) 3/4-10 x 4-1/2 Hex head cap bolts
- (1) 3/4-10 Slotted hex nut
- (1) 1/8" x 1-1/4" Cotter pin
- (4) 1/4-20 Nylon-inter hex lock nuts
- (4) 1/4-20 x 1" Socket head cap bolts

Signature 1000 Installation

- 1 Follow the instructions included with the CB-CCA to affix the Signature cage to the CB-Series buoy.
- 2 Slide the Signature sensor (500 or 1000 model) into the base of the cage mount.
 - a. The bottom of the sensor bulkhead should be flush with the cage plate.

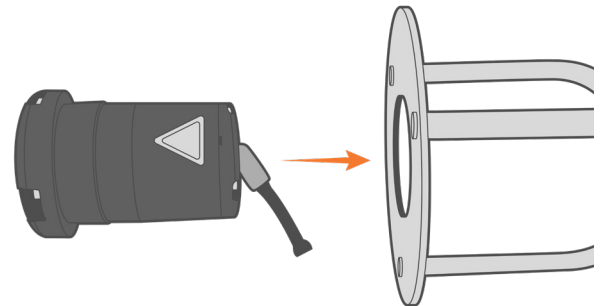


Figure 2: Insert the Signature sensor into the cage.

- 3 Rotate the sensor such that the screw inserts on the sensor bulkhead align with the notches on the instrument cage.
 - a. Feed the (4) included socket head screws through the channels of the sensor bulkhead.
 - b. Thread on a nylon nut to each.

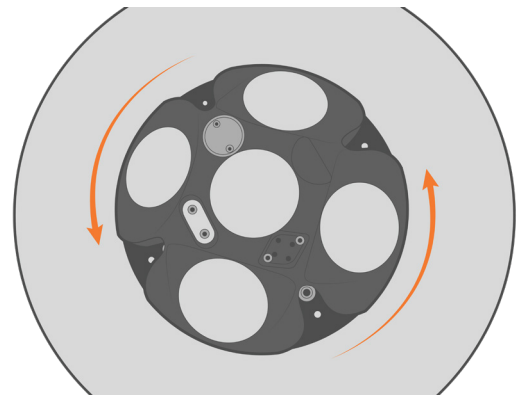


Figure 3: Align the sensor with the bolt notches.

- 4 Evenly tighten down each socket head screw and nylon locknut in a cross-pattern using a 3/16" allen key and 7/16" wrench.

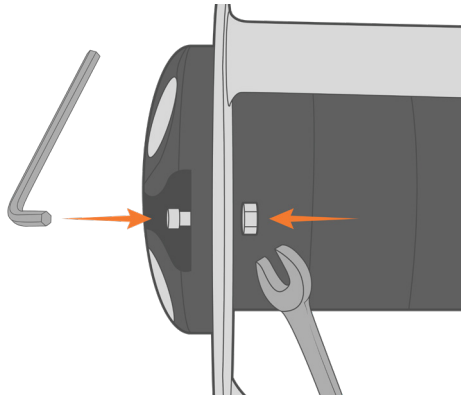


Figure 4: Tighten down the sensor to the cage.

- 5 Connect the external power and communications cable to the sensor.
- Feed the cables through the buoy pass-through ports.
 - Avoid putting tension on the cable connector.
 - Route the cable in a way that it is free from the mooring hardware.

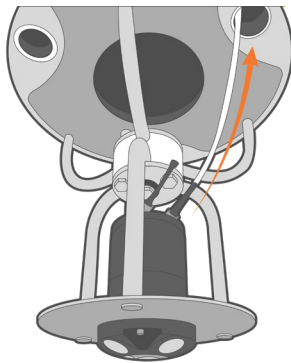


Figure 5: Route the communications and power cable through the buoy pass-through ports.